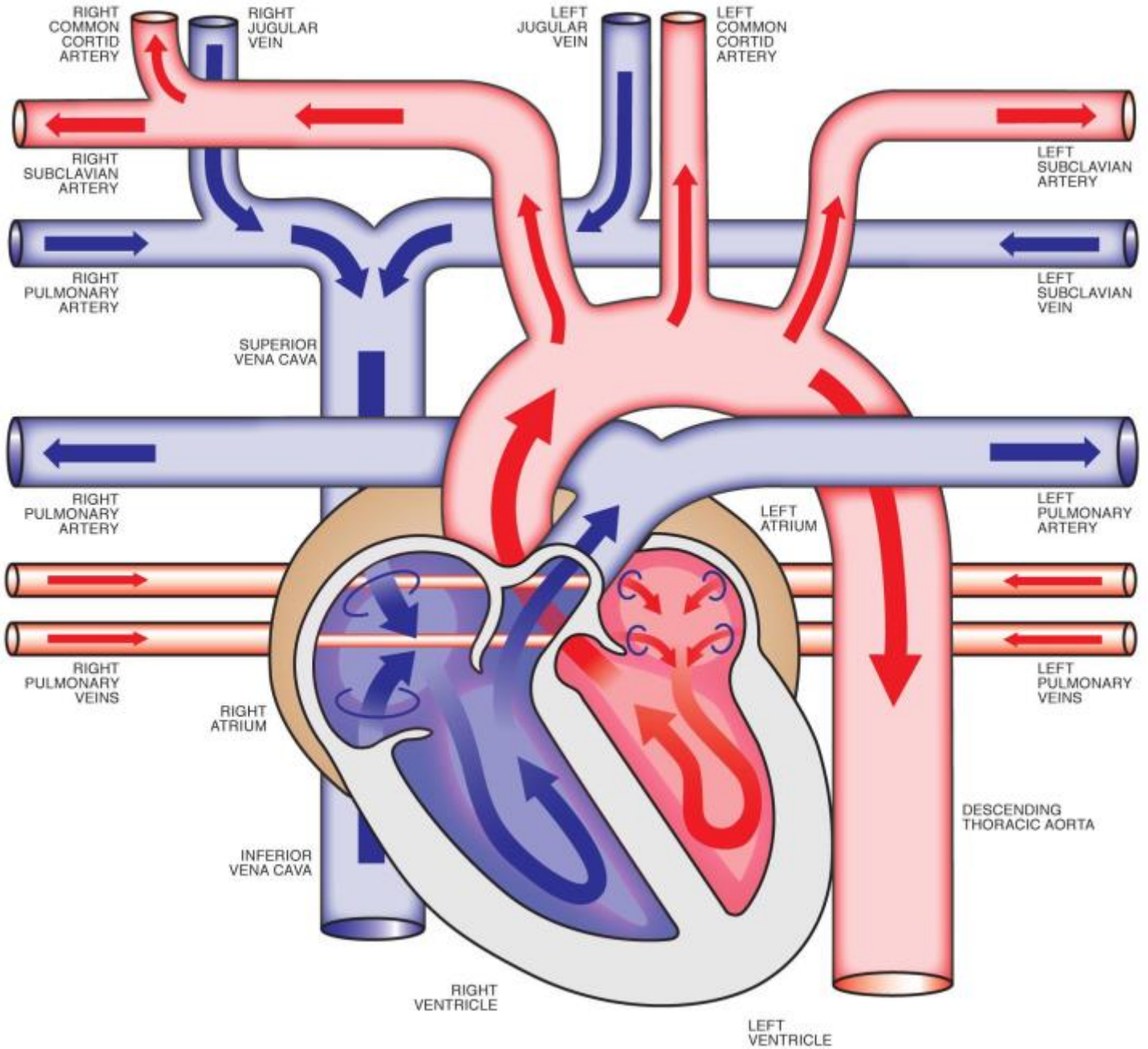
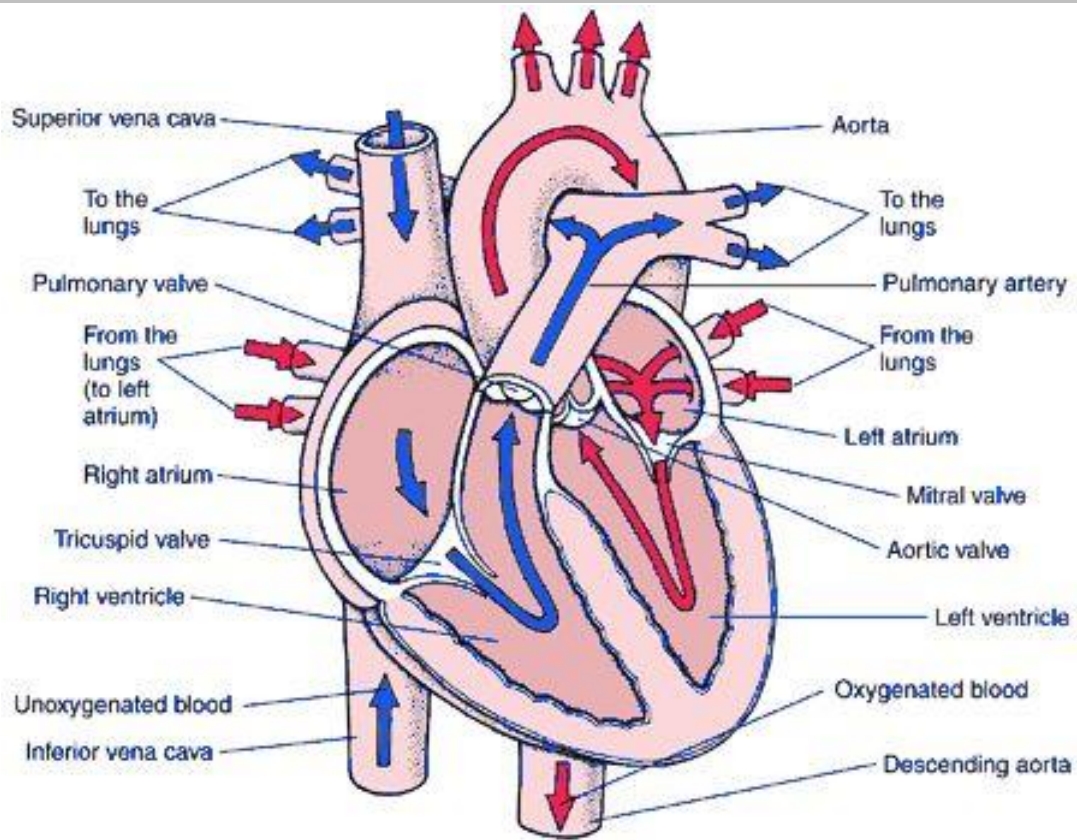
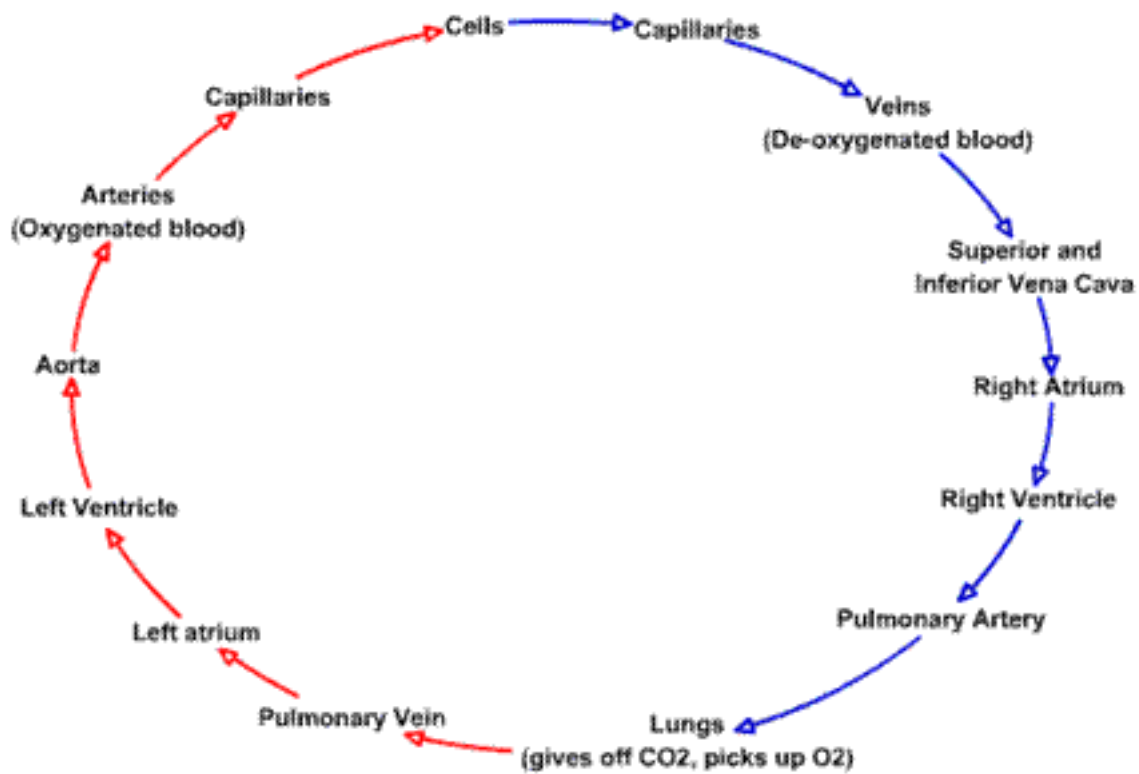


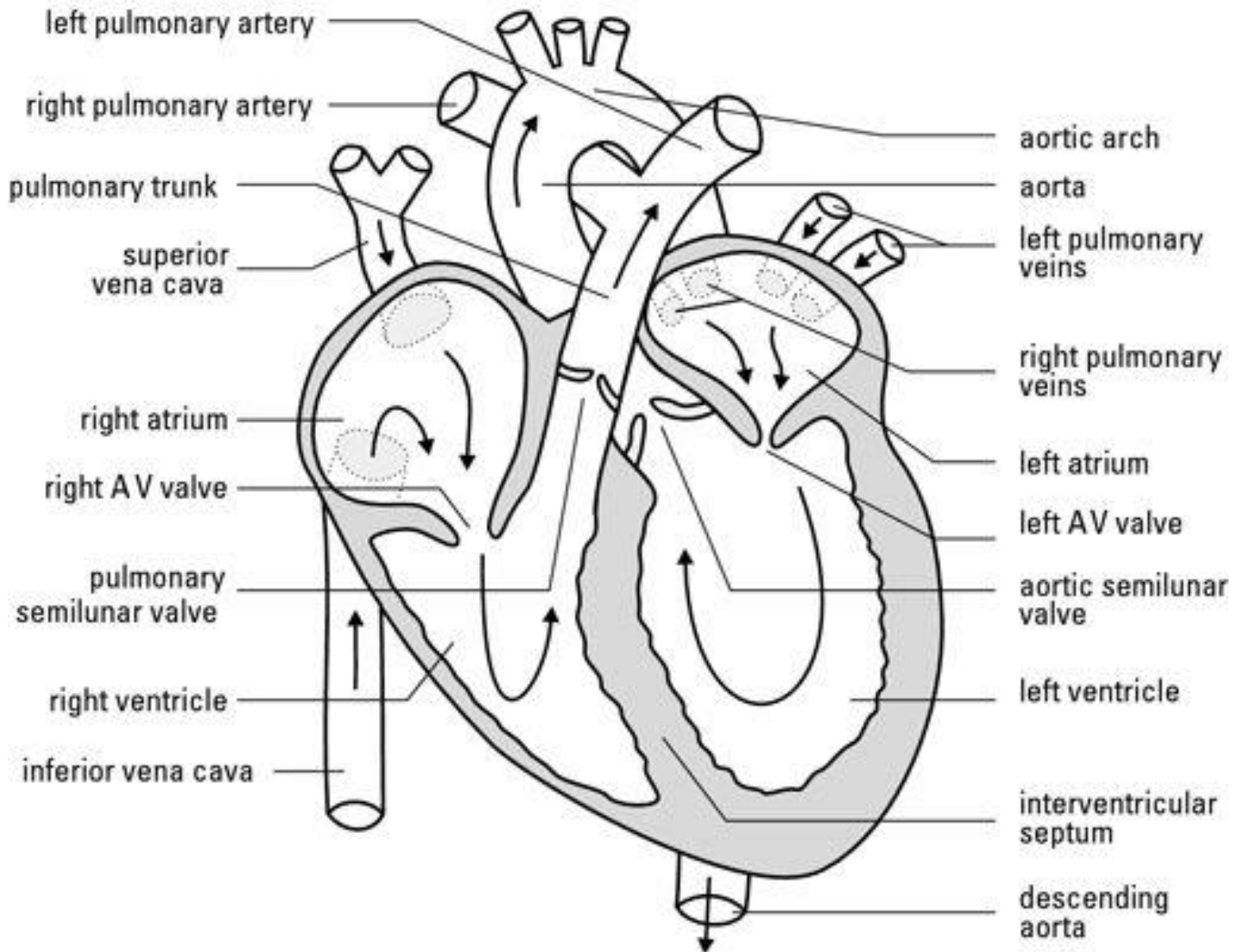
Heart Diagram and flow of blood around the body





Blood flow around the body





## Blood flow around the body Subway Town Map Assignment

### Mission:

The purpose of this assignment is to have you familiarize the flow of blood inside the heart and around the body

### What do you need to do?

Create a 'subway' or 'train' map with various stops that mimic the blood flow inside the heart and around the body.

Use a major city building such as the legislative building as the heart, and build your blood flow around it with other 'shops', 'stores', 'buildings', as your stops around the heart.

For example:

You must include:

- All 4 chambers of the heart
- Valves in the chambers of the heart
- The lungs
- Pulmonary vein and artery
- Aorta
- Superior and inferior vena cava
- Arteries, veins, capillaries (capillary bed)
- Show gas where the gas exchange occurs
- Colour in the oxygenated (red) and deoxygenated side (blue)

How you are graded:

**10marks** for labeling and relating your 'town buildings' to the parts of the heart such as the legislative building is the heart, or the Manitoba hydro building is the lungs etc...

**5marks** on creativity – how creative were your buildings and components? Did they actually relate to the real stuff?

**5marks** on overall care of assignment – is it well coloured? Is it well put together?

**Total 20 marks**

Use the heart diagrams, and blood flow diagrams to help you in identifying the blood flow order.

Where to start?

Start in the left atrium with blood coming in.