

Overview of the digestive system visual assignment

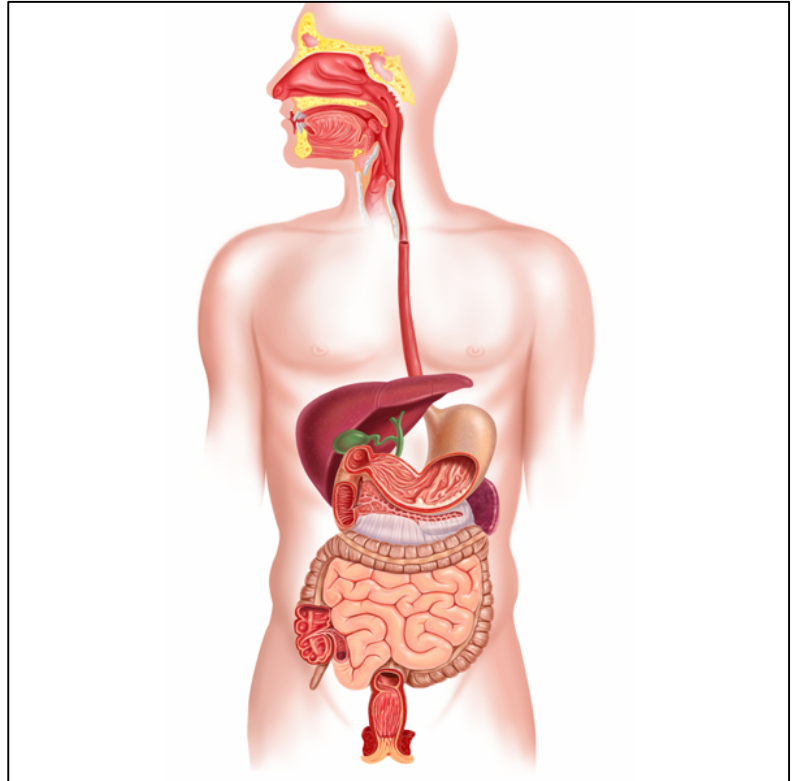
Name: _____

Partner's Name: _____

In this assignment, you are to create an *overview* diagram of the digestive system on a *large* sheet of paper or several pieces taped together.

For each of the major sections such as the oral cavity, you are to create sectional '*flaps*' that fold out with the more detailed diagrams of the layer below.

Example: For the oral cavity, your overall drawing would be a person mouth, but as that flap is opened, it reveals another layer of the pharynx, salivary glands, tongue and tongue.



Your final product:

Your final product should be

- Coloured
- Well-labeled
- Detailed with all the items included (see below)
- Contains several 'layers' for the different details of organs.

Assessment:

This assignment is worth 20 marks

Any missing components will result in deduction of grades

Any miss labeling will result in deduction of grades.

The assignment is also marked on quality and accuracy such as color, well put togetherness, and accuracy.

What you need to include:

- The Mouth
 - Pharynx
 - Tonsils
 - Uvula
 - Oral Cavity
 - Tongue
 - Salivary Glands
- Esophagus
- Diaphragm
- Stomach
 - Gastric pit
 - Gastric gland
 - Cells that secrete mucus
 - Cells that secrete HCl and Enzyme
- Small intestine
 - Duodenum
 - Lumen
 - Section of intestinal wall
 - Villi
 - Lacteal
 - Globlet cells
- Large intestine
 - Transverse Colon
 - Ascending colon
 - Descending colon
 - Sigmoid Colon
 - Cecum
 - Rectum
 - Anal Canal
- Appendix
- Anus

Accessory organs

- Pancreas
 - Pancreatic duct
 - Common Bile duct
- Liver
- Gallbladder