

Assignment 1: Cladogram review

Create an overall cladogram of the animal's section (does not include plants, Protista, and fungi)

- ❖ Your cladogram must include all the phyla, and any classes that we have talked about.
- ❖ Your cladogram must also include all the branching points and characteristics.
- ❖ Your cladogram must also include a brief description (underneath or on the side) of each branching point characteristic.

Assessment:

Accuracy of your cladogram	/5 marks
Neatness and overall quality of your cladogram	/5 marks
Correct descriptions of your cladogram	/5 marks
Total	/15 marks

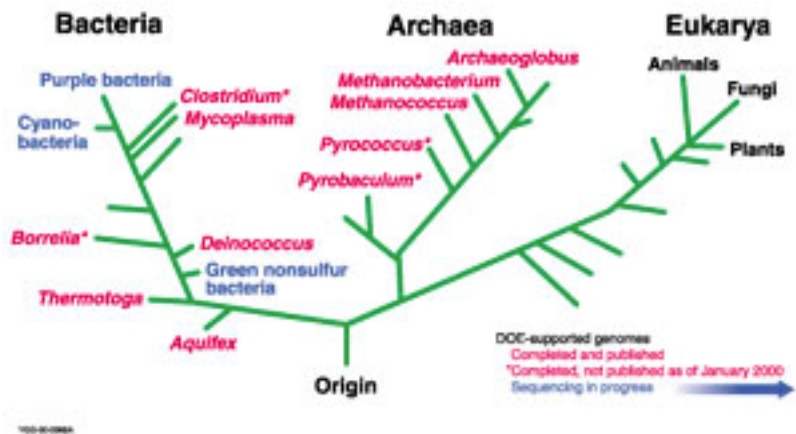
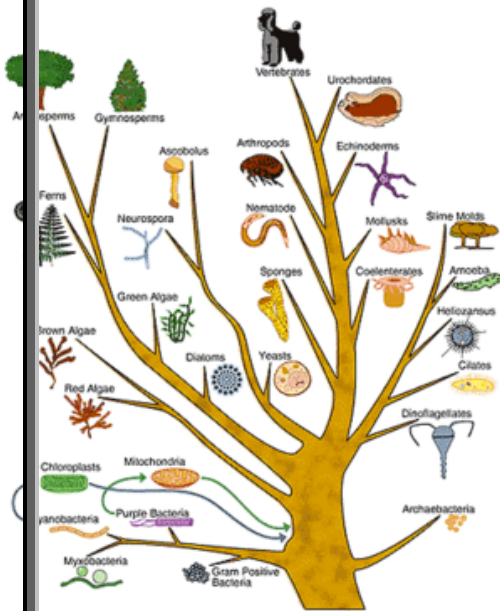
Assignment 2: Overall phylogenetic tree of all the organisms.

- ❖ Create a phylogenetic tree that includes all the phyla/classes that we have discussed
- ❖ **Hint:** Use a large piece of paper!!
- ❖ Include all the branching point characteristics
- ❖ Descriptions are not needed for this phylogenetic tree, only the characteristics.

Assessment:

- ❖ Accuracy of your phylogenetic tree /5 marks
 - ❖ Neatness and overall quality of your tree /5 marks
- Total /10 marks

Basically a phylogenetic tree is a cladogram but that is all spread out in a tree like fashion. See below.



Assignment 3: Organism Identification booklet

Procedure:

1. Each student will research and find 5 different organisms.

The five organisms must be:

Three in the phylum *chordata*

One in the domain *eukarya* (not in chordate)

One in the kingdom *plantae*

The five organisms must be specific (with its specific name and common name)

2. The pool of organisms will be pooled in the middle and every student will randomly select 5 from the pool.
3. The student will then add the sixth organism of anything of their choice (more points if the organism is more unique and uncommon).

Your task with the 6 different organisms:

1. Create a profile of each of the organisms including the following:
 - a. Provide the common and specific name at the top
 - b. A picture of the organism
 - c. A cladogram with the characteristics to the organism (just to the class level) – Only write the characteristics that pertain to your organism – neglect others
 - d. Describe the characteristics that pertain to the organism
 - e. Where (geographically) you would find the organism
 - f. Describe the habitat that the organism lives in.
 - g. Unique characteristics of the organism

Rubric:

Thoroughness and comprehensiveness of the information	/10marks
Neatness and overall quality of your booklet	/7marks
Accuracy of your cladogram	/3 marks
Total	/20 marks